

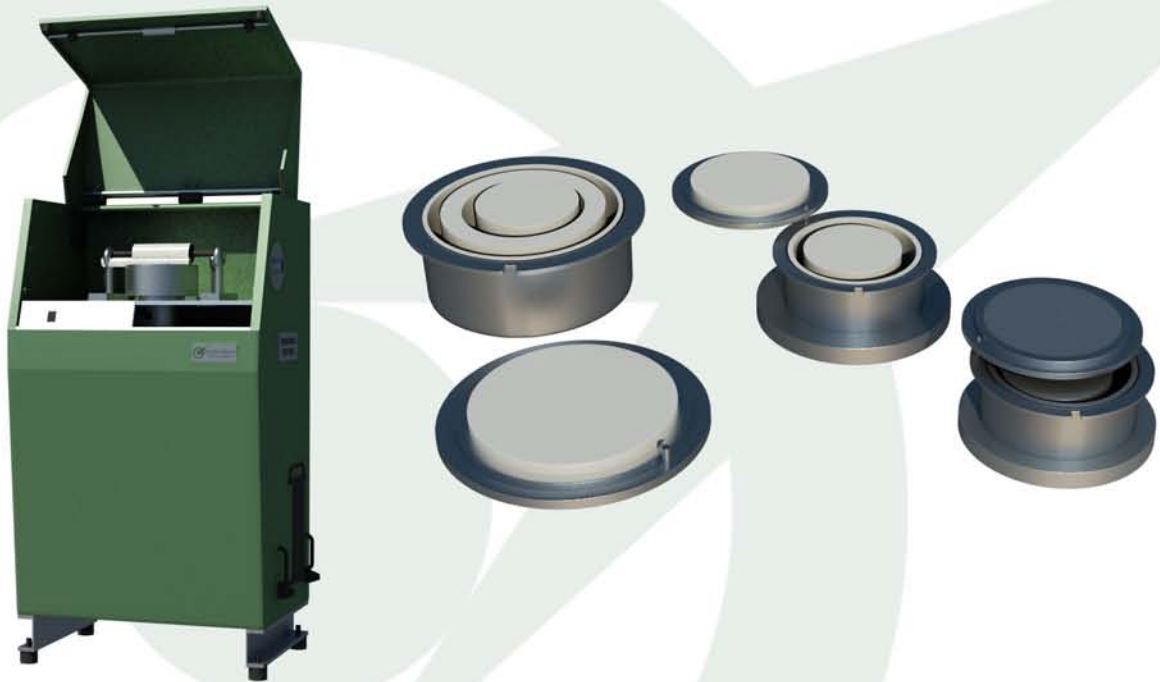


Decide with Confidence



STAR TRACE[®]
PRIVATE LIMITED

LABORATORY VIBRATING CUP MILL



Single Source

**Incorporated testing, design engineering, fabrication,
and services to confirm tailor-made total systems**

www.startraceld.com

INTRODUCTION

Star Trace offers a range of products which are widely used across various laboratories and also hold diverse industrial applications. These wide range of products are manufactured according to industrial quality and standards. Backed by our excellent engineering and quality control team, we are able to satisfy the client requirement for various engineering products all over the world. With more than 20 years of experience in this field, we have been supplying technically accurate and superior products to our clients and have catered to the requirement of variety of sectors and clients.

VIBRATING CUP MILL MODEL: STCM-250

Vibrating Cup Mill operates on the principle that the grinding set is fixed on a freely vibrating structure and the grinding media (the disc and the ring(s)) inside the grinding set are accelerated by centrifugal force. The sample material is ground by a combination of impact and friction forces, which depending on the material can reduce the particle size down to 10-20µm.

The materials of construction of grinding media depends up on the type of samples to be grind.

- For Geological Ores & Minerals - Hardened Steel Grinding Media.
For Alloys - Tungsten Carbide Lined Grinding Media.
For Coal & Coke - Tungsten Carbide Coated Grinding Media.

Voltage/connection values	230-240 V
Frequency	50-60 Hz
Input Power	1200 W
Working principle	Friction and Impact.
Grinding parts	Bowl/Ring/Hammer
Materials of the grinding sets	Stainless steel, Hardened Steel, Hardmetal tungsten carbide, Agate, Zirconium oxide
Motor speed	600-1500 rpm
Max. feed size (depending on material)	12 mm
Min. sample quantity	10-20 ml
Max. sample quantity	250 ml
Final fineness	10-20 µm
Feeding	Batchwise
Useful capacity	50, 100 or 250 ml
Dimensions (W x D x H)	Floor instrument-80 x 82 x 120 cm

Single Source

Corporate Headquarters

Old No: 7, New No: 5,
Jeevanandham Street, Redhills,
Chennai-600 052, India.
Phone: (0091-044) 26418456,
26419439, 32975456.
TeleFax: (0091-044) 26419439
Mobile: (0091) 9380521576,
9380521567, 9841015456.
Email: sales@startraceltd.com

City Office

Old No: 526, New No: 41,
1st Floor, 3rd Avenue Road,
N.S.K Nagar, Arumbakkam,
Chennai-600 106, India.
TeleFax: (0091-044) 43500032.

Works

No:11, Moorthasa Ussian
Sahib Street, Redhills,
Chennai-600 052, India.

Canadian Representative

Mr. Mahes parteepan
Phone: (001) 2988003549
Mobile: (001) 647 783 9627
Email: mahesh@startraceltd.com

Myanmar Representative

Mr. KYAW MIN TUN
Mobile: +95-973166695
Email: kyaw@startrace.in

Indonesia Office

BLOK D6-NO.5, MGK - Mega Kemayoran,
Office Tower A Lt.1 Jl. Angkasa,
Kota Baru Bandar Kemayoran,
Jakarta Pusat 10610.
Phone: +62 81311594498.
Email: sales@startrace.co.id

Dubai Representative

Mobile: 00971557526778
Email: mahesh@startraceltd.com